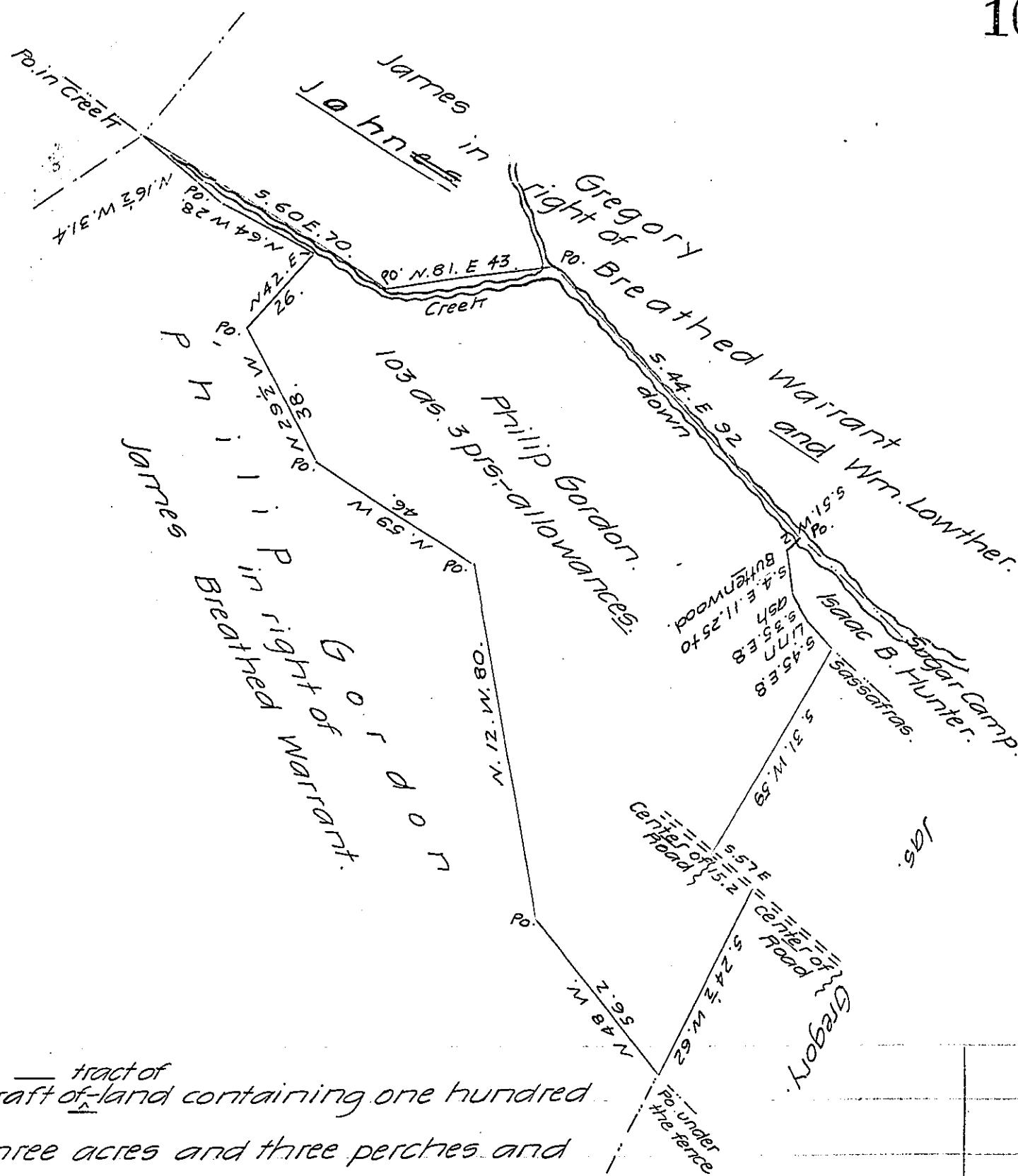


FORM NO 1.



tract of
 Draft of land containing one hundred
 and three acres and three perches and
 allowances &c. of 6 per cent for roads &c. Situate on the North
 Branch of Big Tomoloway Creek in Bethel Township in the County
 of Fulton. Surveyed 3d day of October A.D. 1870, in pursuance of
 a warrant granted to Philip Gordon for 75 acres of improved
 land bearing date the 20th day of August A.D. 1870

Wm. P. Gordon - S_v

To Jacob M. Campbell
 Surveyor General.

Carefully examined and approved by me this 13 day of
 January A.D. 1871.

I. N. Culp. C.S.

IN TESTIMONY that the above is a copy of the original remaining on file in
 the Department of Internal Affairs of Pennsylvania, made
 conformably to an Act of Assembly approved the 16th day of
 February, 1833, I have hereunto set my Hand and caused
 the Seal of said Department to be affixed at Harrisburg,
 this ninth day of December 1907

Henry Howell

Secretary of Internal Affairs.